



10 Surma Close, Whitechapel, London, E1 5DD  
£1,250,000



## 10 Surma Close, Whitechapel, London, E1 5DD

**£1,250,000**

Stunning 5-Bedroom Refurbished Home in the Heart of London

A beautifully refurbished five-bedroom home, perfectly positioned in the heart of East London. This spacious and energy-efficient property offers the ideal blend of modern living and unbeatable location.

Inside, the property features five bright and spacious bedrooms, a sleek and modern kitchen, stylish bathrooms, and comfortable open-plan living. Recently renovated to a high standard, it also benefits from solar panels, helping reduce energy bills and environmental impact.

Whether you're a growing family, group of professionals, or investor looking for strong rental appeal, this home offers space, style, and a truly prime London location.

Just an 8-minute walk to Whitechapel Station, with access to the Elizabeth Line, District, Hammersmith & City, and Overground, this home offers effortless connectivity across London. You can reach Liverpool Street in under 5 minutes, and Shoreditch High Street is just a 15-minute walk away, placing you within easy reach of some of the capital's best dining, nightlife, and cultural spots.

## Description

Stunning 5-Bedroom Refurbished Home in the Heart of London

A beautifully refurbished five-bedroom home, perfectly positioned in the heart of East London. This spacious and energy-efficient property offers the ideal blend of modern living and unbeatable location.

Inside, the property features five bright and spacious bedrooms, a sleek and modern kitchen, stylish bathrooms, and comfortable open-plan living. Recently renovated to a high standard, it also benefits from solar panels, helping reduce energy bills and environmental impact.

Whether you're a growing family, group of professionals, or investor looking for strong rental appeal, this home offers space, style, and a truly prime London location.

## Situation

Just an 8-minute walk to Whitechapel Station, with access to the Elizabeth Line, District, Hammersmith & City, and Overground, this home offers effortless connectivity across London. You can reach Liverpool Street in under 5 minutes, and Shoreditch High Street is just a 15-minute walk away, placing you within easy reach of some of the capital's best dining, nightlife, and cultural spots.

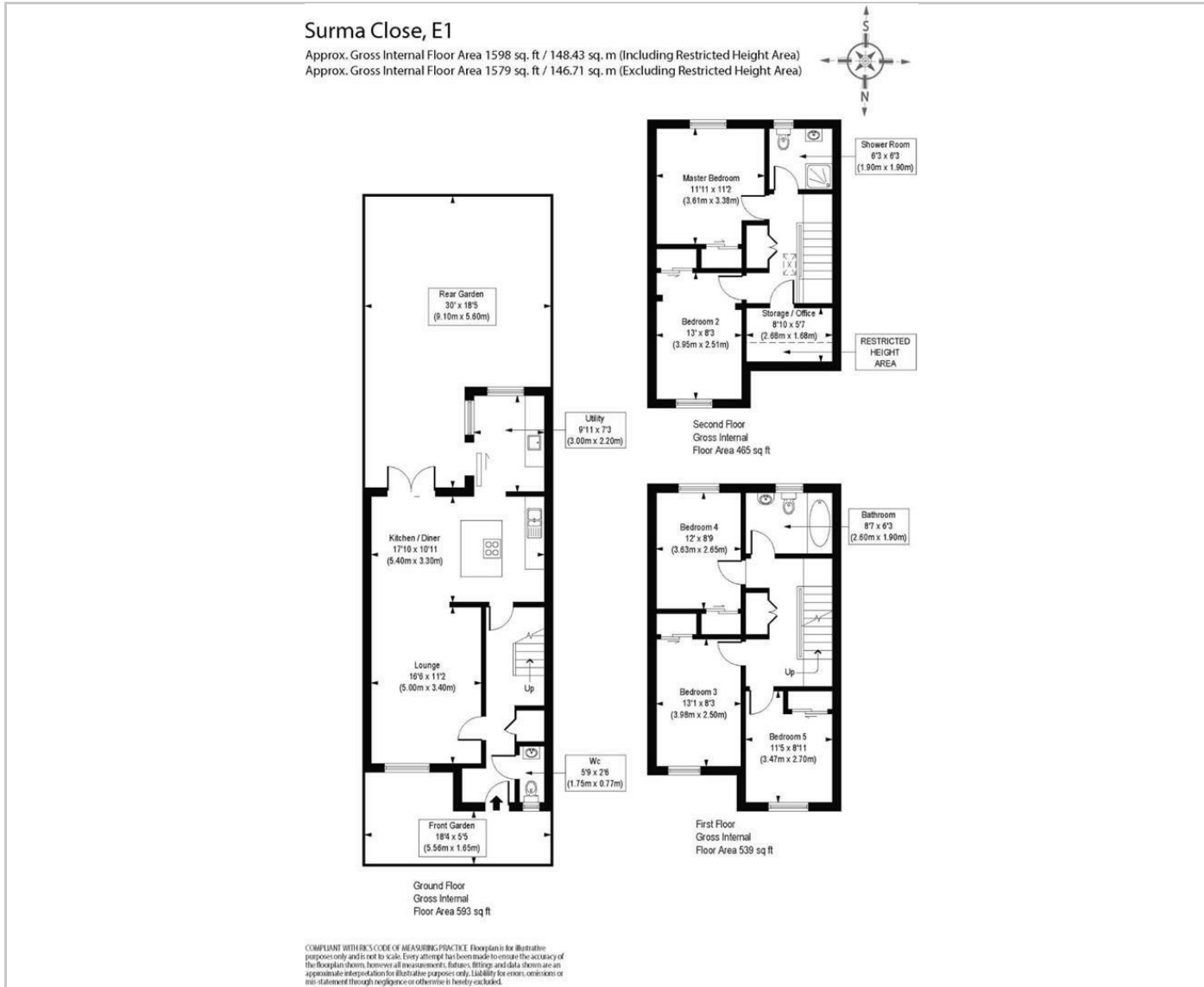
null

Council Tax Band: F

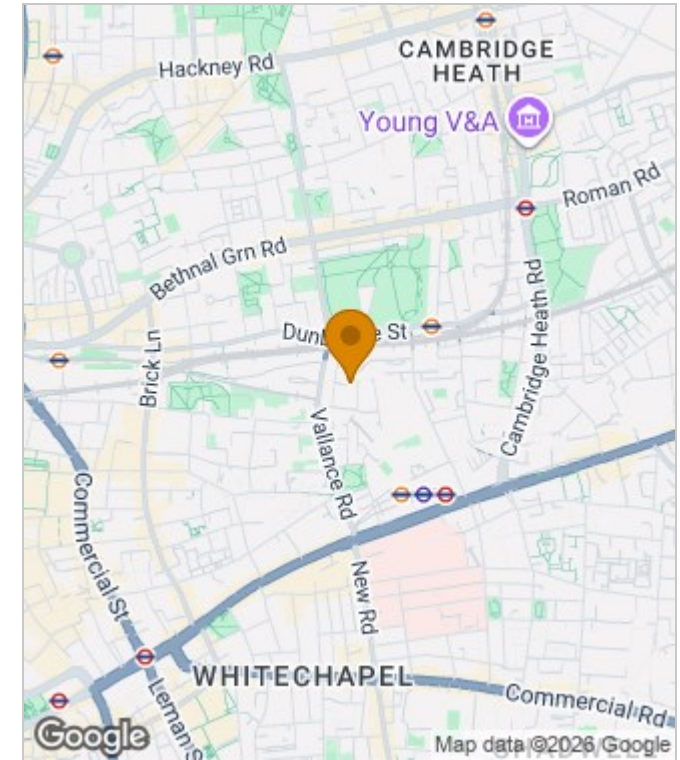
Available:



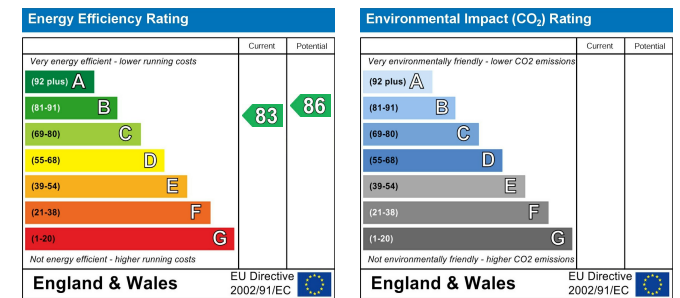
# Floor Plans



# Area Map



# Energy Performance Graph



These particulars, whilst believed to be accurate are set out as a general outline only for guidance and do not constitute any part of an offer or contract. Intending purchasers should not rely on them as statements of representation of fact, but must satisfy themselves by inspection or otherwise as to their accuracy. No person in this firm's employment has the authority to make or give any representation or warranty in respect of the property.